

1. DLINK

1.1 Product Description

The following are device specific configuration settings for the D-Link Router. Navigation through the management screens will be similar but may vary across specific products in this vendor's family of routers. See the vendor's website for more information about wireless configuration at <http://www.dlink.com/tutorial/wireless/>. The following equipment was used in the test case:

Device: D-Link DI-624 AirPlus Xtreme-G Router
Firmware: Version 2.42
Firmware Release Date: March 31, 2004

1.2 Configuration of Recommended Security Policies

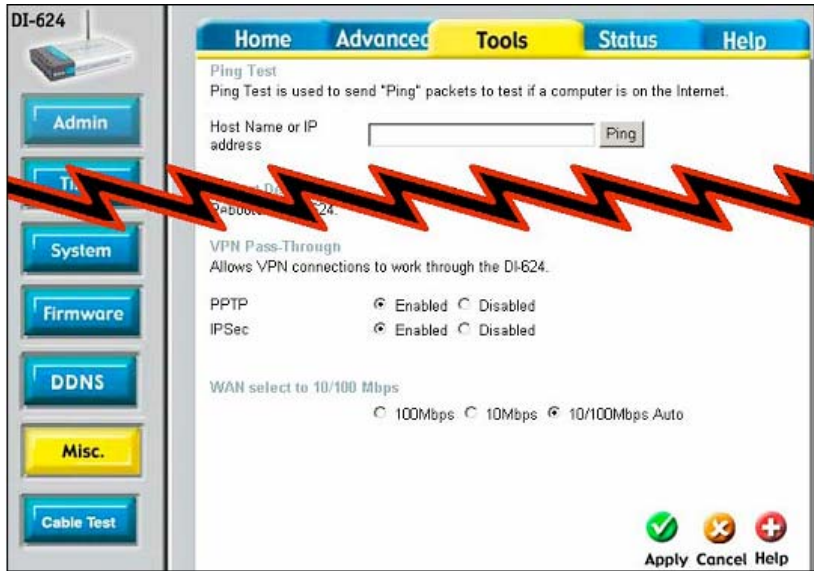
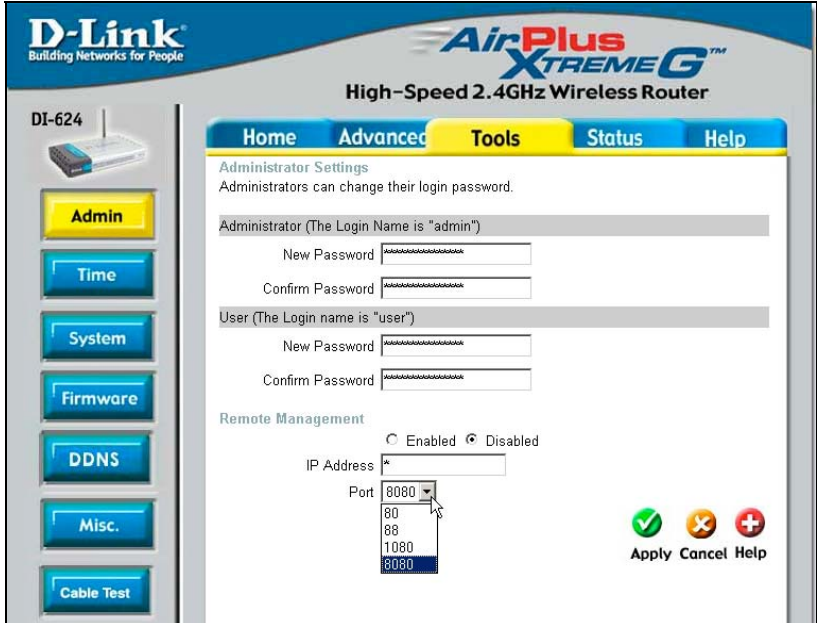
2.3.1.010	Use layer 2 or 3 encryption with AES
<p>The model tested does not support AES but can be configured to allow VPN pass-through by clicking on the Tools tab and selecting the Misc. button.</p>  <p>The screenshot shows the D-Link DI-624 web interface. The 'Tools' tab is selected, and the 'Misc.' button is highlighted with a red lightning bolt. The VPN Pass-Through section shows PPTP and IPSec both set to 'Enabled'. The WAN select is set to '10/100 Mbps Auto'.</p>	

Figure 1-1. Dlink: VPN Pass-through Settings

2.3.1.020	Choose products that support a network level security management solution.
Not tested	

2.3.1.030	Disable management ports on network devices when not in use.
<ul style="list-style-type: none"> - Select the Tools tab and then the Admin button - Select Disabled in the Remote Management area <p>Note: If remote management is enabled, do NOT enter/allow the wildcard * in the IP address field as shown below. Instead, use one of the higher software port numbers.</p>	
	
<p>Figure 1-2. Dlink: Disabling Remote Management</p>	

2.3.1.040	Use OOB management across a specially configured VLAN for network administration/management
This feature is not available on the DI-624	

2.3.1.050	WLAN must have session timeout capability and must be set to 15 min or less
This feature is not available on the DI-624	

2.3.1.060 Set AP transmit power to lowest possible to attain signal strength required
Navigate to the **Advanced** tab, **Performance** button as shown below.

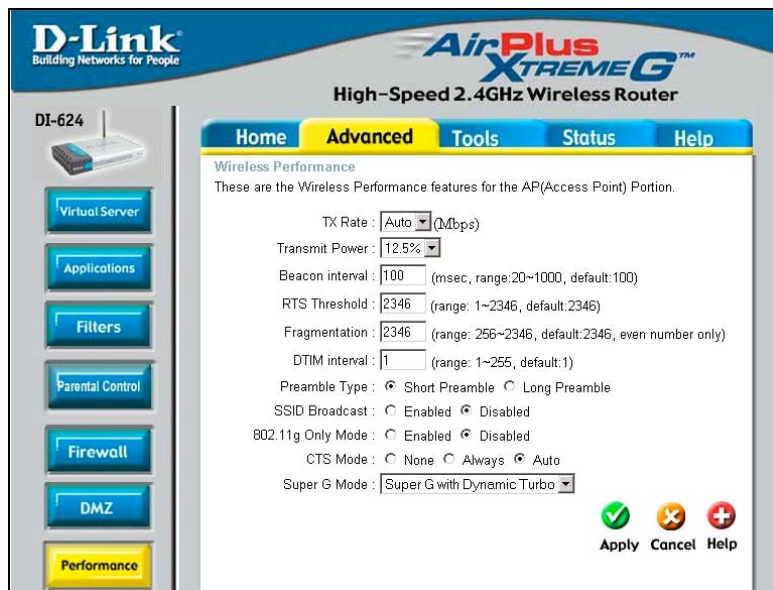


Figure 1-3. Dlink: Setting Transmit Power

2.3.1.070 Password-protect AP and bridges beyond manufacturer's default setting
Select **Tools** tab and then the **Admin** button to manage this setting.

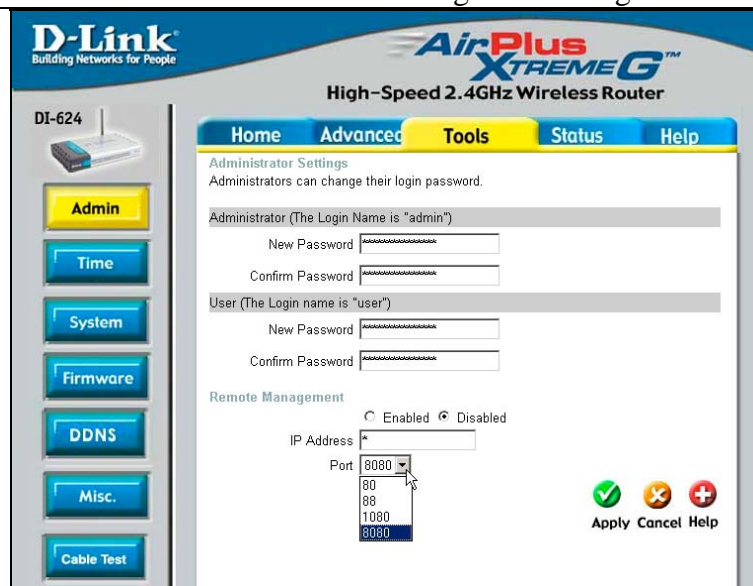


Figure 1-4. Dlink: Setting Admin Password

2.3.1.080 | Change default SSID

- Select the **Home** tab and then the **Wireless** button
- Enter an SSID in the **SSID** field

Note: The size of the field allows for a full 32 character SSID. The display does not show the full field width but will scroll when necessary. The visible portion of the display below is an example of a random character string used for SSID.



Figure 1-5. Dlink: Changing the SSID

2.3.1.090 | Disable SSID broadcast mode

- Select the **Advanced** tab and then the **Performance** button.
- Select **Disabled** in the **SSID Broadcast** option

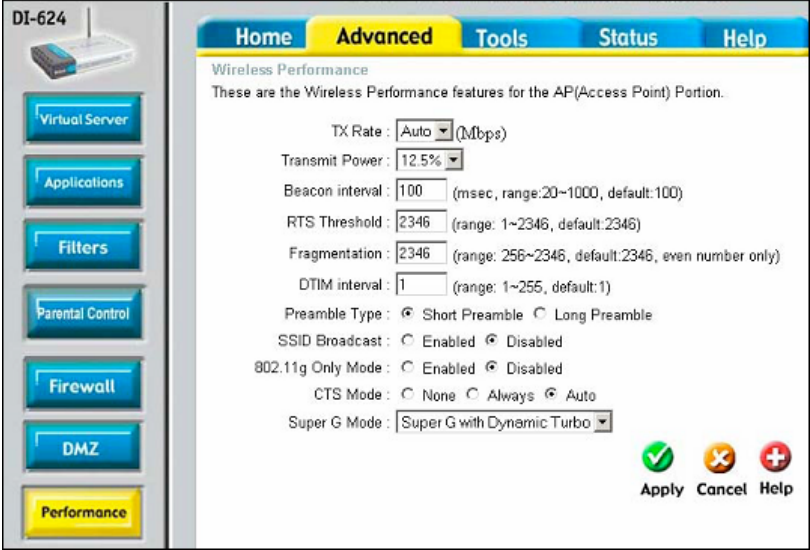


Figure 1-6. Dlink: Disabling SSID Broadcast

2.3.1.100 Enable MAC address filtering

- Select the **Advanced** tab and then the **Filters** button.
- Change the setting from the default setting (IP Filters) to **MAC Filters**. This must be changed before the management screen for MAC Filters will be seen.
- Select the option for **Only allow computers with MAC address listed below to access the network**

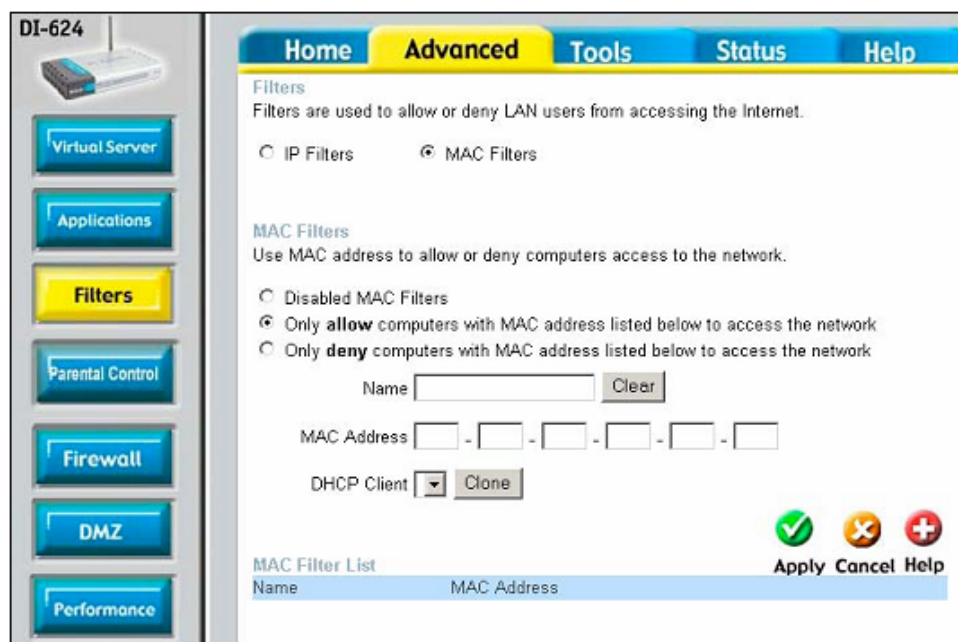


Figure 1-7. Dlink: Enabling MAC Address Filtering

An additional setting available on the D-Link DI-624 AP/Router which we recommend setting will force the static assignment of all DHCP addresses by limiting the IP Address Range to cover just those devices for which a MAC address is available. This will also prevent the AP from serving up DHCP addresses for unknown MAC addresses. In the example below, the **Starting IP Address** and the **Ending IP Address** are the same. At the bottom of the screen, there is one entry for “MyPersonallaptop”, and no room in the DHCP configuration for any others.

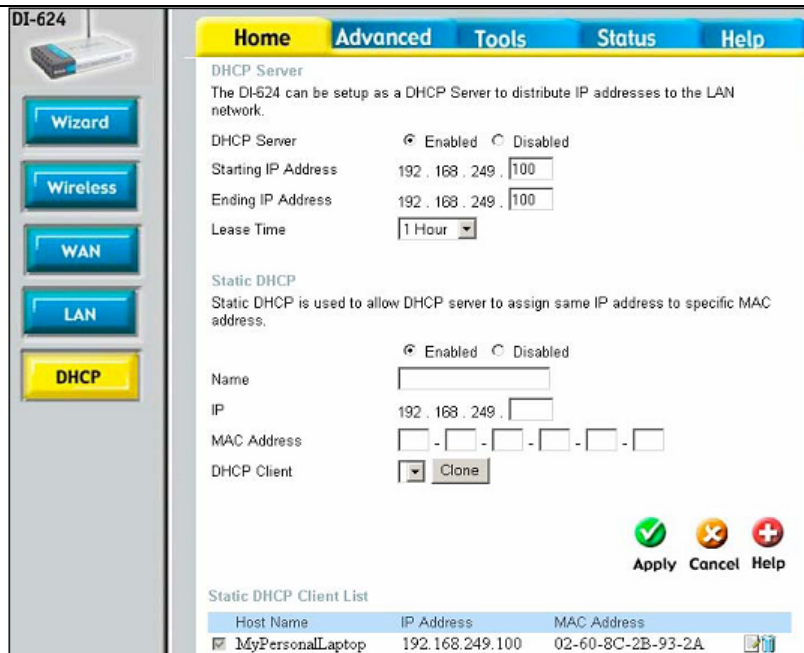


Figure 1-8. Dlink: MAC Address Filtering-Static DHCP

In the example below – only one IP address is allowed to pass through the AP, so that only the single assigned IP address can use the AP.

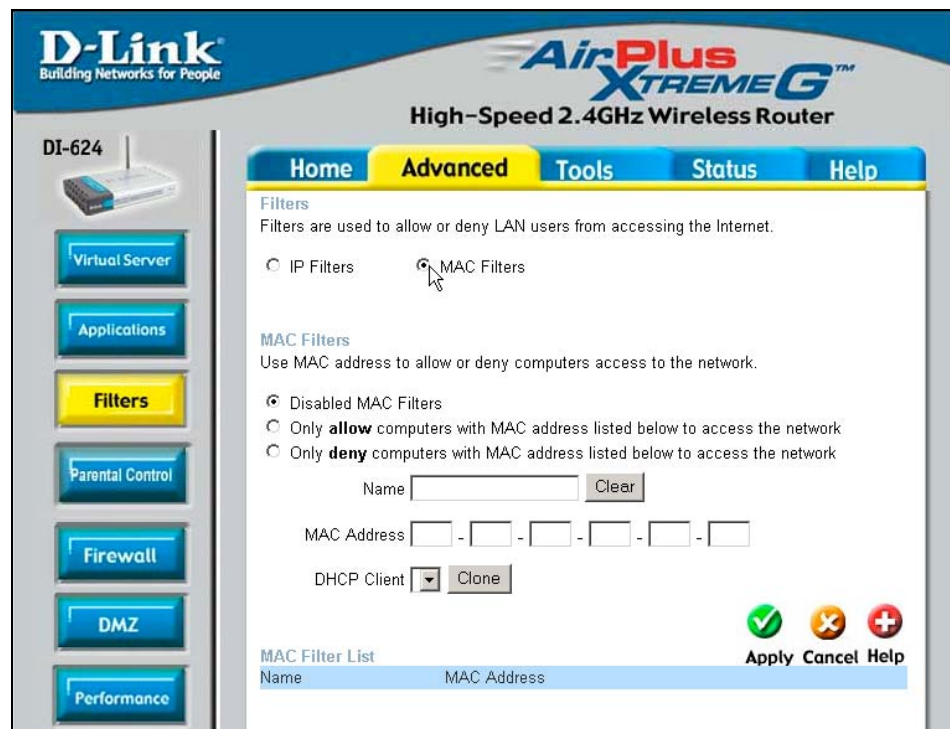


Figure 1-9. Dlink: MAC Address Filtering-Network Access

2.3.1.110	Backup system configuration settings
Configuration	Not tested

2.3.1.130	Enable and configure logging
Configuration	Not tested